

Cable and pipe transits for process industries





Standardize with superior seals

Specify, design and install the world's most innovative and flexible sealing solutions for cables, pipes and conduits.

End-users and project owners who standardize with Roxtec transits ensure operational reliability, simplify expansion and reduce the costs and challenges of

maintenance. EPC firms benefit from the flexible design of a modular-based system with confidence in globally certified solutions.

Your global one-stop shop for safety and operational performance.

roxtec.com/processindustries

"Roxtec means quality and good support."

John Lim, Yokogawa Electric International Pte Ltd

Efficiently sealing more cables

Roxtec solutions are 50 percent more space efficient than any cable gland solution, and thereby allow for the use of smaller cabinets. Save time and money by reducing the need for multiple knock-outs in cabinets or cut-outs in walls and floors in buildings and E-houses. Thanks to the built-in spare capacity for future needs, you can also avoid making additional holes onsite.

- Cut costs instead of holes
- No more cutting off pre-terminated connectors
- Simplicity for installation and maintenance teams
- Installation is up to 50 percent faster than with conventional cable glands



One system for safety in extreme environments

Roxtec solutions cover many simple as well as the most demanding requirements to protect your people and your operations in the most harsh and hazardous environments.





Best in class for many applications

End-users, designers, engineers, contractors and maintenance teams all over the world save time and money by standardizing with Roxtec transits.

Buildings and E-houses

- Wall entries
- Floor entries
- Underground entries
- Control rooms
- Analyzer shelters
- Substations
- Remote instrument buildings (RIB)
- Field auxiliary rooms (FAR)
- Local equipment rooms (LER)

Terminal boxes, cabinets and enclosures

- Remote I/O cabinets
- Hazardous locations (Ex e)
- Ordinary locations
- Electric heat trace
- Automation and control cabinets
- DCS panels
- Motor control cabinets
- Safety instrumented systems (SIS)
- Fire and gas detection control cabinets
- Machine monitoring systems
- Lighting panels

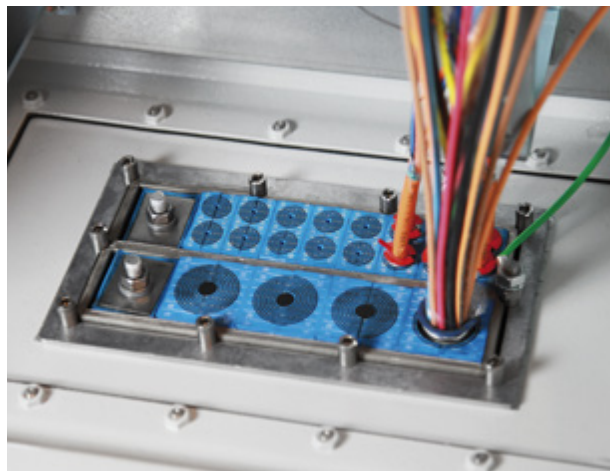


Outstanding solutions

Cabinets – multi-cable entries

Manage high cable density in your enclosures and junction/terminal boxes. Use the innovative and patented Roxtec BG™ B design for armored cable types to ensure bonding, grounding and protection against EMI.

- Light-weight direct replacement to cable glands
- Single cut-out, one solution for up to 32 cables
- Quick and easy installation of pre-terminated cables



Buildings and E-houses – multi-cable transits

Seal multiple cables in each opening. The transits are available in different materials and for any kind of structure.

- Separation of cable categories
- Fire, gas, water and blast resistant
- No spare parts needed for upgrades



Underground cable entries

Protect your site against constant water pressure. Eliminate humidity and reduce the risk of partial discharge.

- Easy to install even in running water conditions
- Excellent cable retention capabilities
- Gas-tight, corrosion resistant rodent barrier



Pipe penetration seals

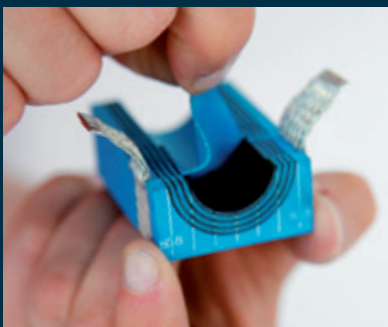
Prevent fire, gas and water from spreading. Use the transits for new pipes or for retrofit around existing pipes.

- Fast single-side installation
- Seal cables and pipes of different sizes in one opening
- Perfect for retrofit and for reducing the need for welding

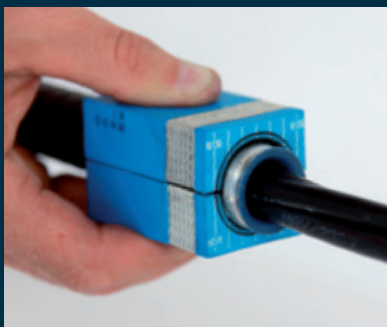


Roxtec ensures a perfect fit, regardless of the dimension of the cable or pipe.

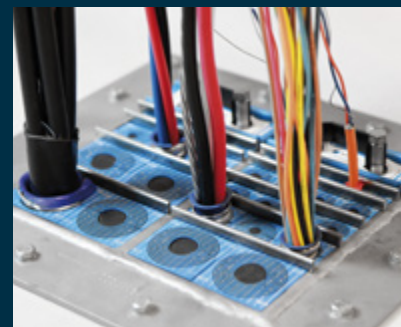
If you use Roxtec BG™ B, you can also ensure bonding and grounding of armored cable types.



Roxtec Multidiameter™ is an innovation for flexibility based on removable layers.



It makes the mechanical system adaptable to cables and pipes of different sizes.



With only a few parts you get a strong reliable barrier securing operational performance.

Roxtec sealing solutions protect life and assets by providing:

- Blast resistance
- Gas-tightness as a vapor-tight barrier
- Fire protection, up to 4 hours
- Sealing against water pressure
- Corrosion resistance
- A barrier to rodents, insects and snakes
- Vibration damping
- Protection against conducted and airborne EMI



Roxtec at your service

We are committed to safety and perfection – and eager to use our expertise to extend the lifecycle of your project and maintain its value for years to come. We work worldwide to provide design support

and help you choose the right cable and pipe entry solutions for your global project specifications. We are proud to serve you with fast deliveries from our local stock.

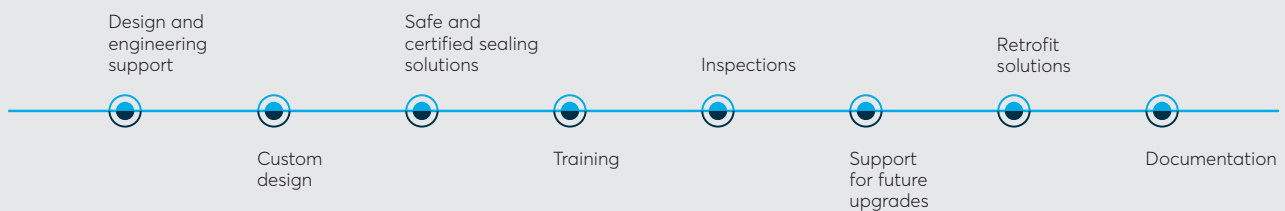


Trusted partner in global mega-projects

With experience from several of the largest projects and from working with most of the major oil, gas, petrochemical and mining companies in the world, we have the know-how to help you manage the most challenging cable and pipe transit needs. We support you onsite and offer our service to con-

duct visual inspections to confirm that your Roxtec cable and pipe entry systems meet the required safety requirements and official regulations. To further enhance your risk management, we include installation training sessions and corrective action recommendations in our full line of offerings.

Roxtec support throughout the lifecycle of your project



More on roxtec.com

"I have used the Roxtec Transit Designer with very good success. I am a solid believer."

Perry Holden, principal electrical designer of CBI



Time-saving engineering tool

Roxtec Transit Designer™ is your shortcut to design accuracy and flexibility and to assure project safety and efficiency. This free, online tool simplifies product selection and the entire process that surrounds cable and pipe transits. Just enter your input and it provides you with full documentation, including installation detail drawings that can be copy-pasted to your project title block. Our solutions are available in Eplan and Intergraph Smart 3D. Generate hole-cuts, drawings and documents in minutes!

- Free web-based application
- Simple product selection
- Tens of thousands of users in 100+ countries

Simple user input:

Cable/pipe schedule or estimates
Sealing/certification requirements
Installation preferences
Material quality selection



Automatically generated output:

2D drawings in DXF and PDF
3D STEP
Bill of material in Excel
Installation instructions
Certificates

Sign up for Roxtec Transit Designer™ at roxtec.com



Roxtec is a global company with a strong local presence

You can always reach a Roxtec representative in your region. We are present all over the world to ensure everything from quick support to smooth logistics and just in time deliveries from local stocks. It is our job to help you succeed if there are late changes in design or production requirements.

Reach your Roxtec contact via [roxtec.com](https://www.roxtec.com)

Protecting life and assets

Roxtec is the world leader within flexible cable and pipe transits. Since the start in Sweden in 1990 we have grown successfully to cover all continents. Our passion is innovative sealing solutions, and our goal is to make our world a safer place.

- Extensive R&D resources and advanced test facilities
- Inventor of Multidiameter™
- Customers in more than 80 markets